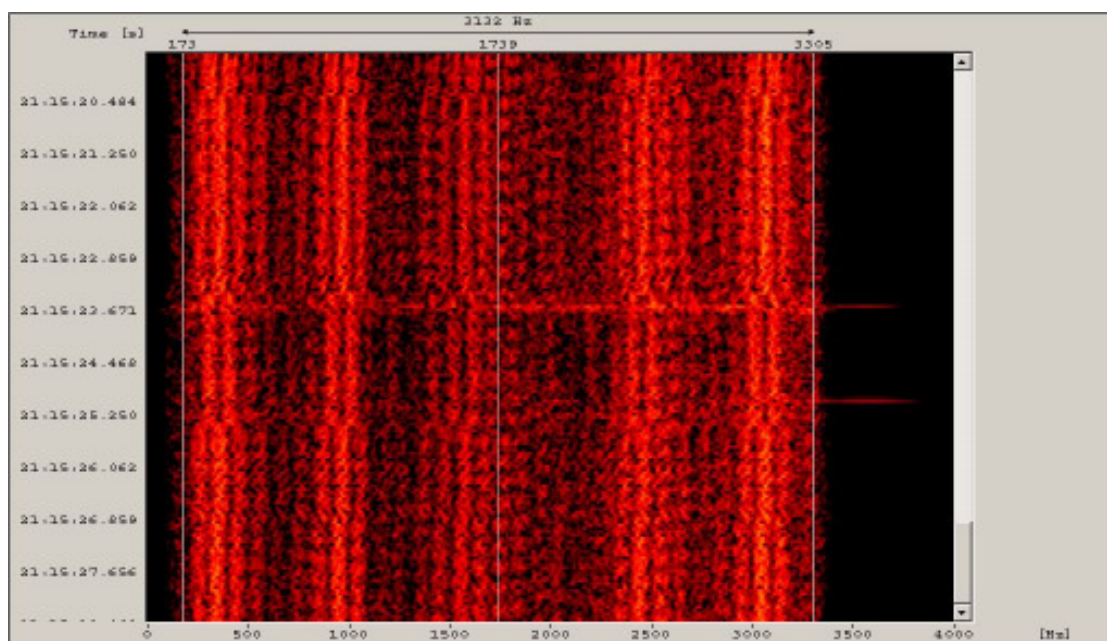




The following sonograms and FFTs will help you to find local intruders:

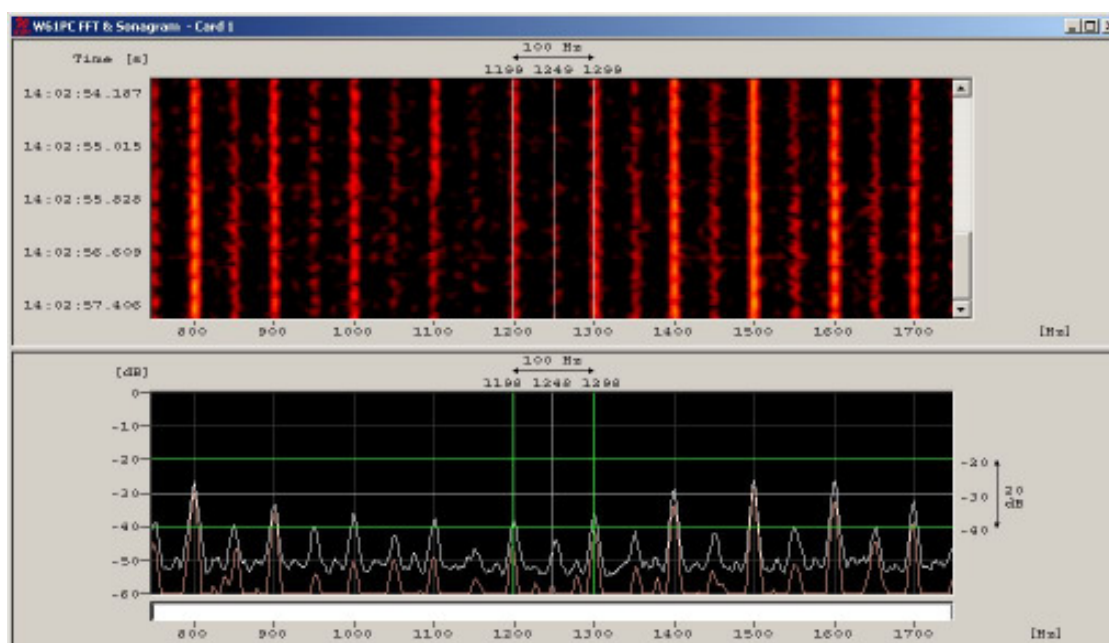
Plasma-TV – shortwave killer – sonogram: 3500 kHz – receiver set to USB – producing QRM from 0.1 – 28 MHz

soundfile: <http://www.iarums-r1.org/iarums/sound/tv-plasma.wav>



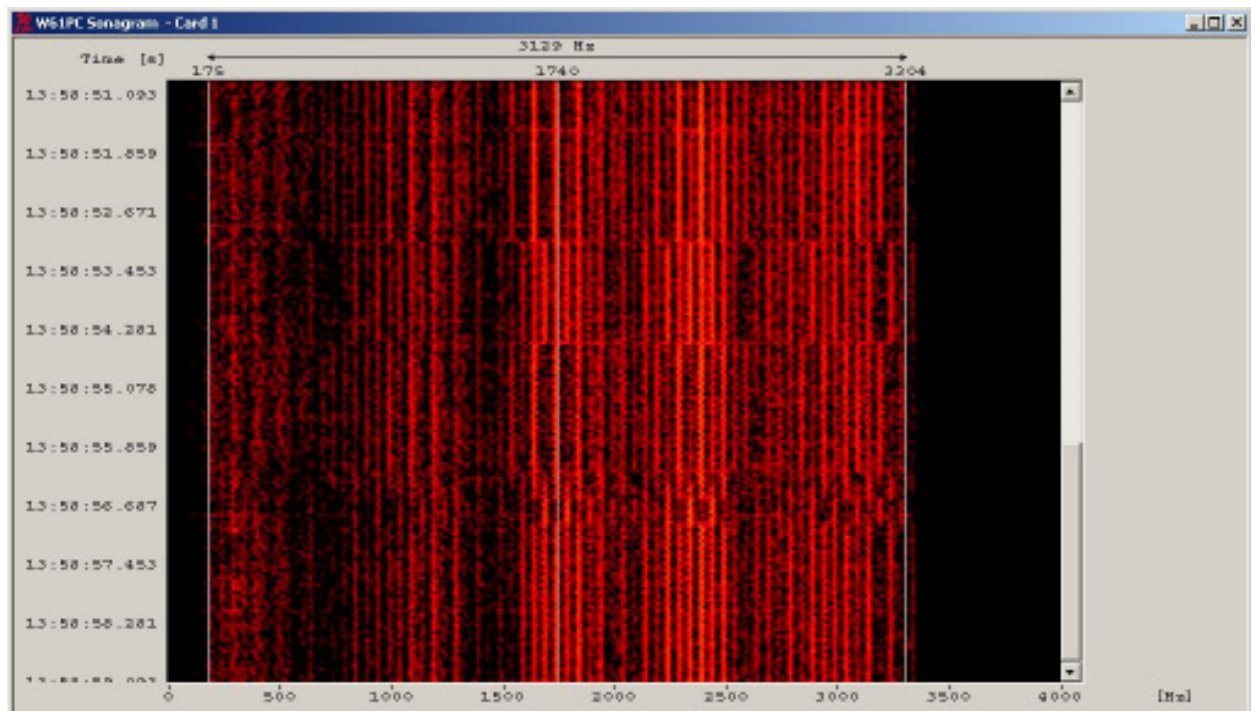
Plasma-TV - shortwave killer – sonogram and FFT: 3500 kHz – AM - producing QRM from 0.1 – 28 MHz

soundfile: <http://www.iarums-r1.org/iarums/sound/tv-plasma-am.wav>



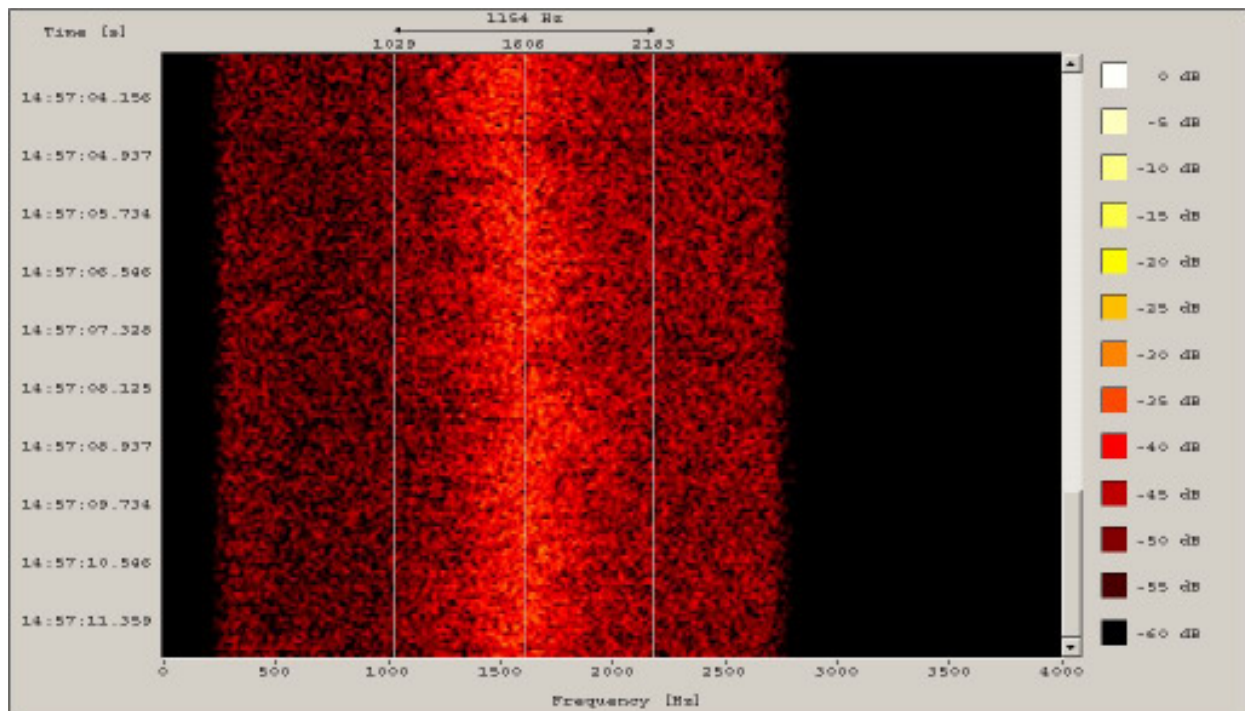
Large LCD-TV shortwave killer – sonagram on 3515 kHz – USB

soundfile: <http://www.iarums-r1.org/iarums/sound/lcd1.wav>



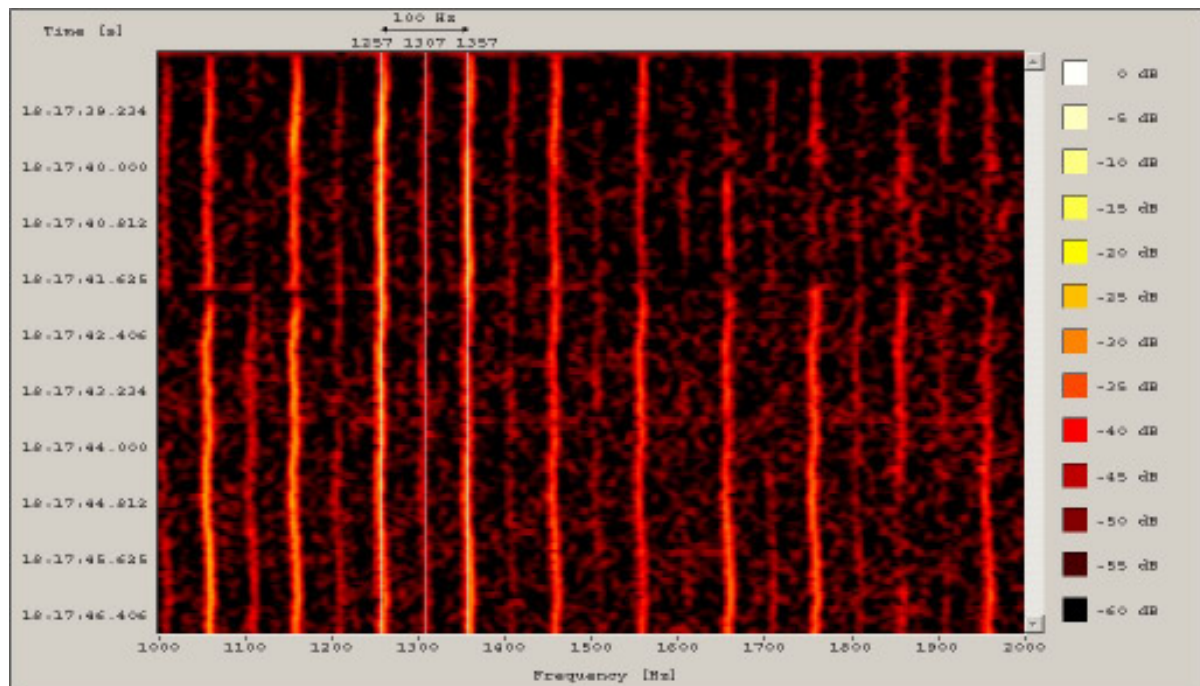
Small LCD – TV harmonic radiations on all bands

soundfile: <http://www.iarums-r1.org/iarums/sound/tv-lcd.wav>



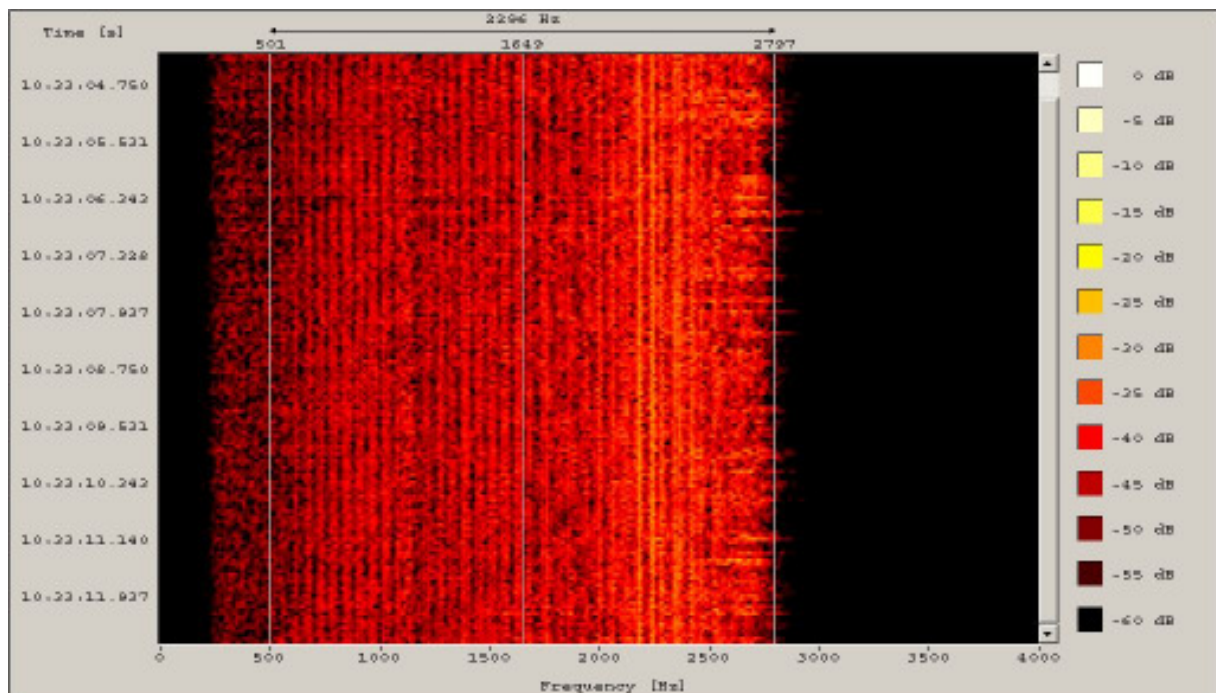
**TV – switching power supply
accumulations in 30 kHz increments, 50 or 100 Hz spectral lines**

soundfile: <http://www.iarums-r1.org/iarums/sound/tv-switchps.wav>



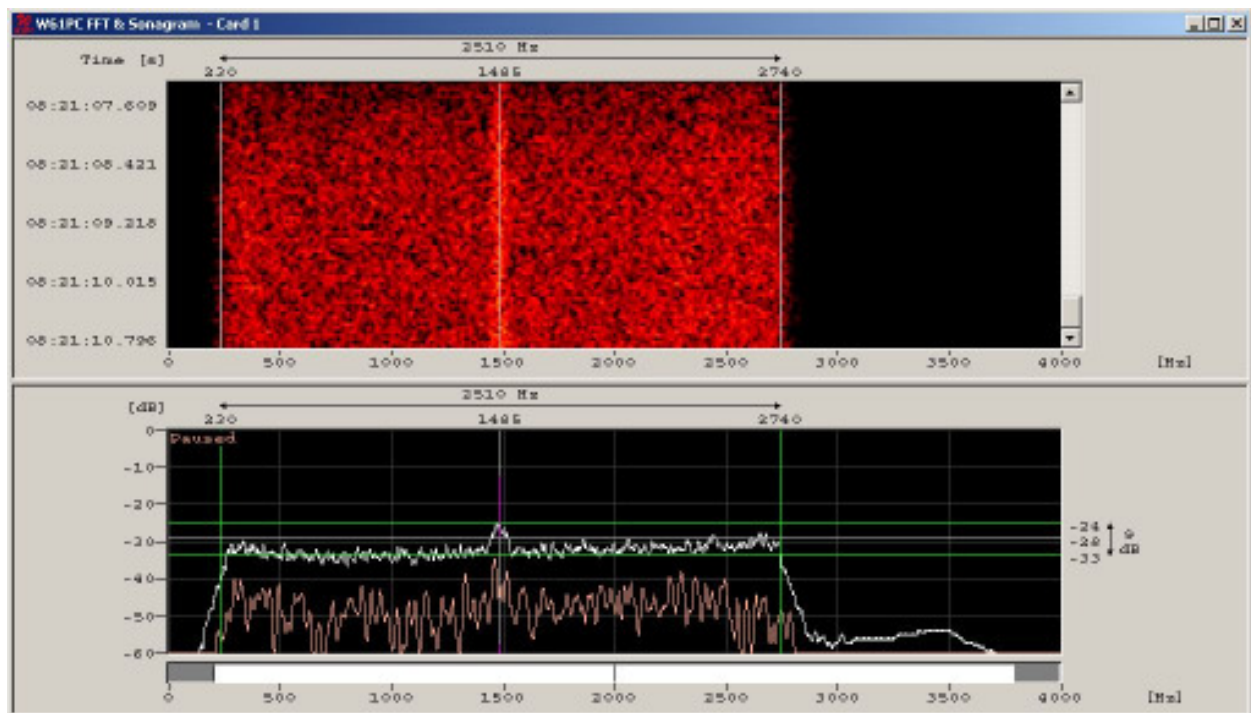
Radiation of a computer monitor, switching power supply

soundfile: <http://www.iarums-r1.org/iarums/sound/moni.wav>



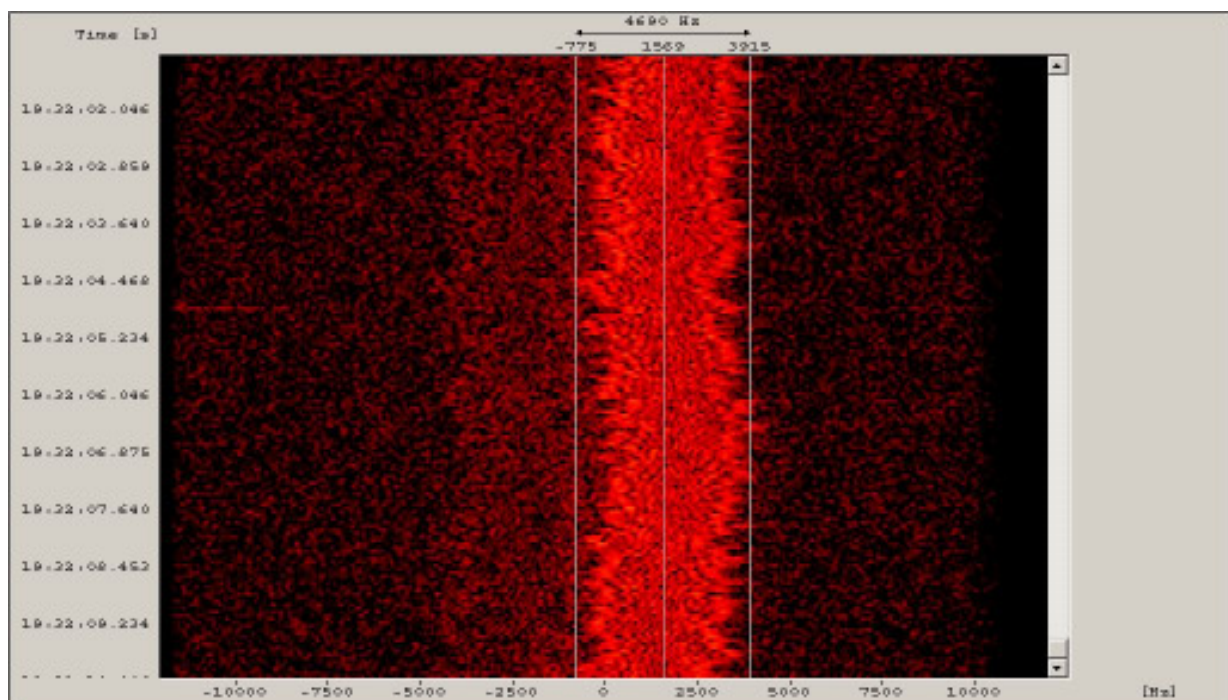
**Radiation of a TFT- computer monitor
very weak (9 dB over white noise), but audible –
spectral lines in 50 kHz increments**

soundfile: <http://www.iarums-r1.org/iarums/sound/tft1.wav>



**Radiation of a broadband DSL-Modem on 10, 21 and 24 MHz
- very unstable signal – radiation source: DC power supply cable -**

soundfile: <http://www.iarums-r1.org/iarums/sound/dslmodem.wav>



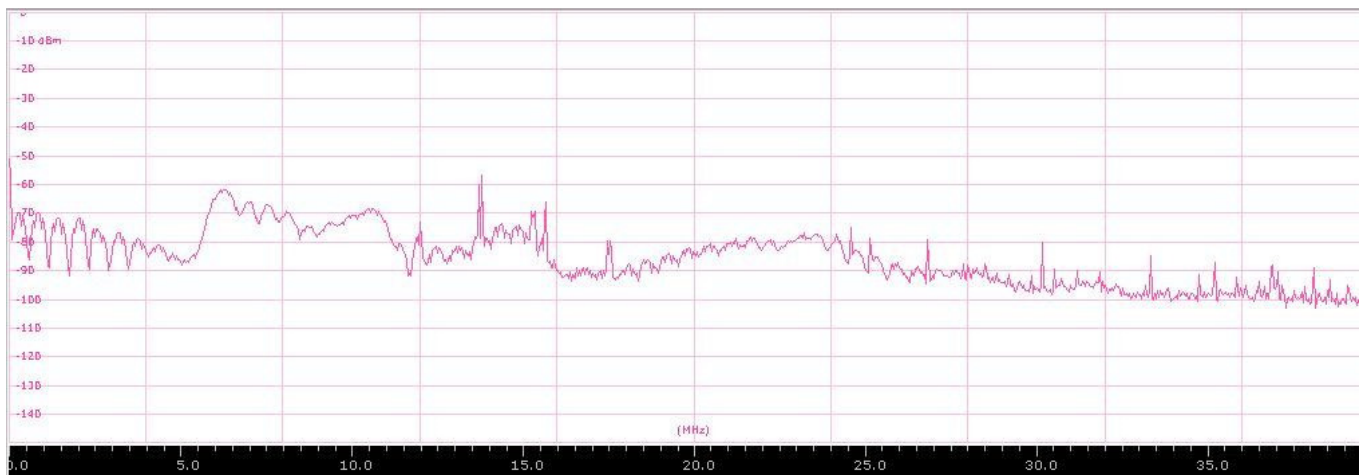
**DC PS black cable with filter (white) – 30 dB reduction
of the disturbing signal!**



**Radiation of a brandnew combined fax-telephone
device (made in Thailand)**

Spectrogram with Perseus - showing the interference from 10 kHz – 30 MHz!

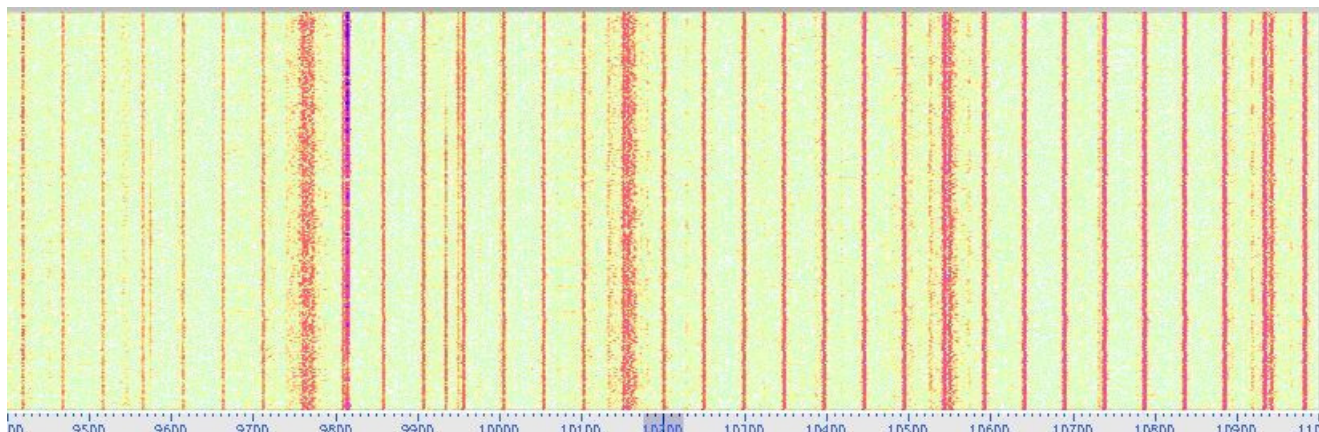
soundfile: <http://www.iarums-r1.org/iarums/sound/fax.wav>



0 5 10 15 20 25 30 MHz

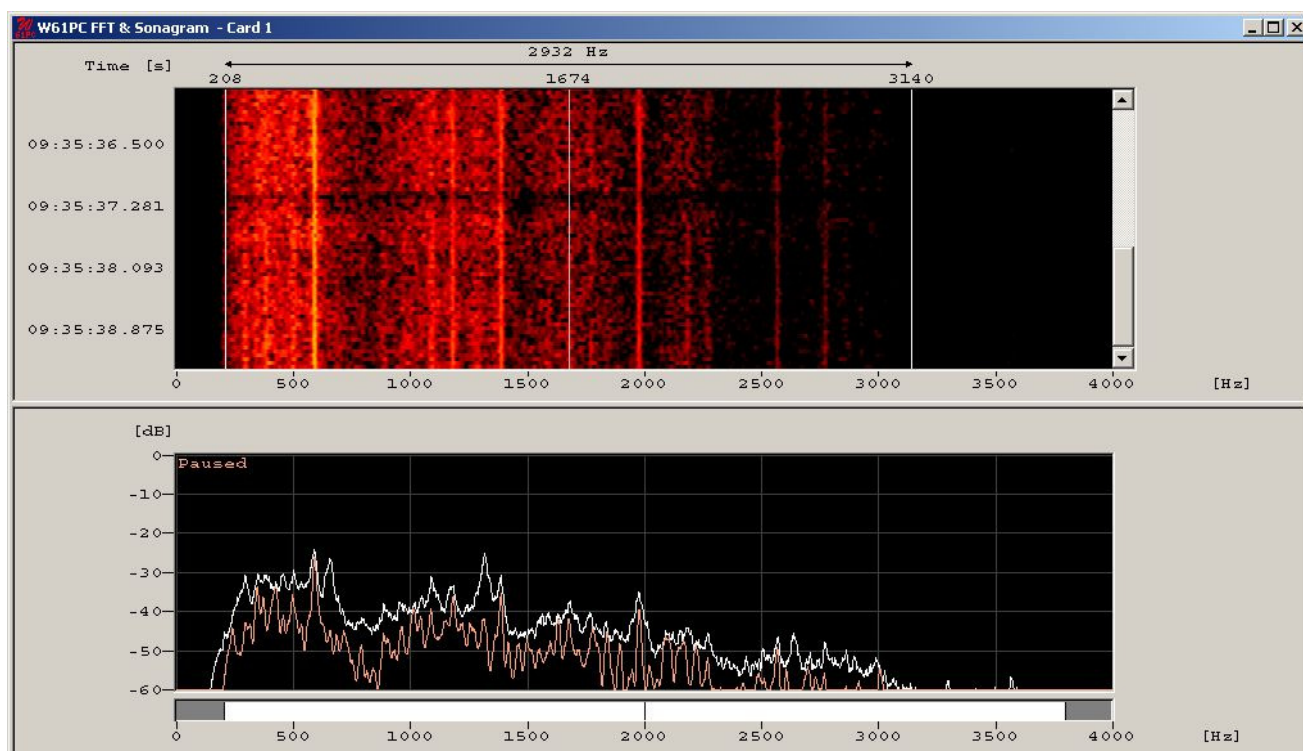
**The same device - spectral lines with 50 kHz and 400 kHz increments –
here: on 10 MHz**

soundfile: <http://www.iarums-r1.org/iarums/sound/fax.wav>



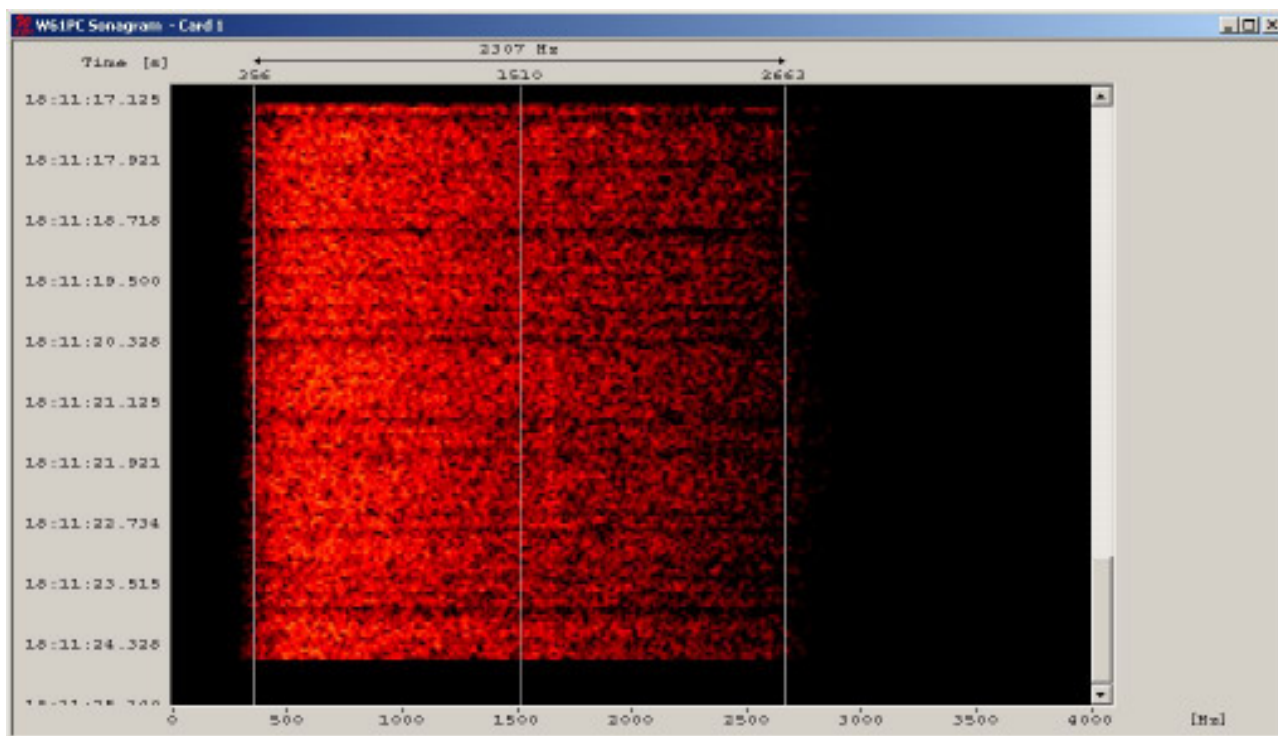
**PLC – shortwave killer in Portugal
producing QRM from 1 - 30 MHz – reported by CT4AN**

soundfile: <http://www.iarums-r1.org/iarums/sound/plc.mp3>



LED Power Supply – disturbing 12 – 15 MHz reported by PA0GRU

soundfile: <http://www.iarums-r1.org/iarums/sound/led.wav>



You can get similar sonograms with all soundcardprograms, which are displaying a “waterfall” !!!
For example: Gram50, Spectran, Multipsk and others. Spectrograms are not very helpful in such cases. Waterfall = sonogram. If you need soundfiles for comparing purposes, please look under “Soundfiles” and “Local Intruders” on our homepage:

<http://www.iarums-r1.org/iarums/sound/main.html>

Screenshots: DK2OM with Wavecom W61 and Perseus

State: November 2009

Compiled and published by DK2OM

credits:

Wavecom Elektronik – Buelach –Switzerland
SSB-Electronic – Iserlohn – Germany
BAZ-Special Antennas - Germany